

## Dear Students!!

In this e-book of [6th class](#), study material of computer science is being sent to you as per new syllabus (2023-24). You can easily prepare your test / papers by reading these notes and watching the video lectures given below. Following are the links of the video lectures in blue colour. Watch these video lectures by clicking on the relevant link of chapter to have better understanding of various concepts.



### 6<sup>th</sup> Class - Monthly distribution of Computer Science Syllabus & Video Lecture Links (Pbi)

Month	Chapter and its Name	Link of Video Lecture
April	<b>Chapter-1 Introduction to Computers</b>	<a href="https://youtu.be/JIAIF6hSapc">https://youtu.be/JIAIF6hSapc</a>
May	<b>Chapter -2 Components of Computers</b>	<a href="https://youtu.be/PnpwPERc5IQ">https://youtu.be/PnpwPERc5IQ</a>
	<b>Chapter -3 Basics of Working with Computers</b>	<a href="https://youtu.be/wcP8JzqhcPI">https://youtu.be/wcP8JzqhcPI</a>
July	<b>Chapter -4 MS Paint</b>	<a href="https://youtu.be/skG2Q93xYWM">https://youtu.be/skG2Q93xYWM</a>
Oct	<b>Chapter -5 MS Paint (Part-2)</b>	<a href="https://youtu.be/MVxeAyjqNpc">https://youtu.be/MVxeAyjqNpc</a>
Nov	<b>Chapter -6 Hardware and Software</b>	<a href="https://youtu.be/sONg_RSr9Q8">https://youtu.be/sONg_RSr9Q8</a>
Dec	<b>Chapter -7 Input Devices</b>	<a href="https://youtu.be/ildZLh_0QMA">https://youtu.be/ildZLh_0QMA</a>
Jan	<b>Chapter -8 Output Devices</b>	<a href="https://youtu.be/OUeFcH2_780">https://youtu.be/OUeFcH2_780</a>

#### Video Lectures for Practical:

**Basics of Working with Computers**

<https://youtu.be/OvtPBBu0nE0>

**(Booting, Login, Desktop, Shut Down)**

**PLEASE DO NOT FORGET TO LIKE, SHARE AND SUBSCRIBE OUR YOUTUBE CHANNEL**

 **YouTube** <http://youtube.com/c/computersciencepunjab>

**Prepared By:**

**Vikas Kansal and Sukhwinder Singh**

**Computer Faculties, S.U.S. Govt. (G) Sen. Sec. School, Sunam Udham Singh Wala (Sangrur)**

Please use the following link to download the study material/e-books/e-contents for 6<sup>th</sup> to 12<sup>th</sup> classes:

<http://cspunjab.nirmancampus.co.in/study.php>

Chapter 5<sup>th</sup>  
MS Paint - Part 2

Que:1 Multiple Choice Questions:

- The clipboard menu has three options - Cut, Copy and \_\_\_\_\_  
a) Paste                      b) Move                      c) Close                      d) Zoom
- The top button, a diamond shape with a line through it is \_\_\_\_\_  
a) Paste                      b) Cut                      c) Copy                      d) Crop
- The \_\_\_\_\_ tool can be used to draw pentagon.  
a) Triangle                      b) Rectangle                      c) Pentagon                      d) Hexagon
- The Eraser tool erase the part of a picture with the \_\_\_\_\_ button of the mouse pressed  
a) Left                      b) Right                      c) scroll                      d) None of these
- Color 2 is used if we press with the \_\_\_\_\_ mouse button  
a) Left                      b) Right                      c) scroll                      d) None of these

Que:2 Very Short answer type Question –Answer in one word:

Q:1 Which tool is used to draw a Square?

Ans: Rectangle tool

Q:2 Which tool can be used to erase a part of picture?

Ans: Eraser tool

Q:3 Which tool allows us for zoom-in our picture?

Ans: Zoom tool

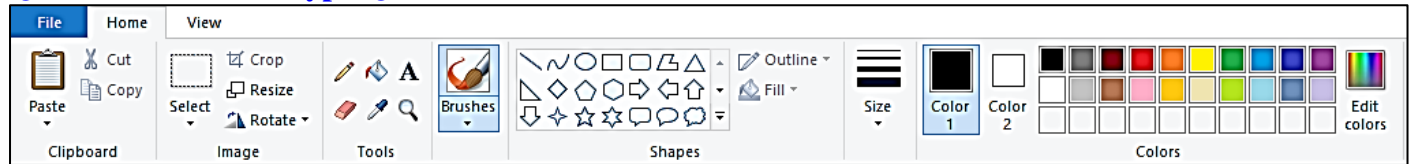
Q:4 Which tool is used for free-hand writing?

Ans: Pencil tool

Q:5 Which tool can be used to write text in our drawing?

Ans: Text tool

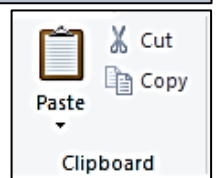
Que:3 Short Answer type Questions:



Q:1 What are the options available in the Clipboard Menu?

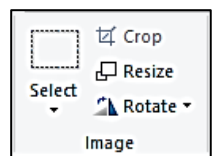
Ans: The Clipboard menu on the Home tab has the following options:

- Paste
- Cut
- Copy



Q:2 Write about Crop option.

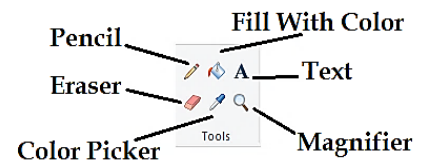
Ans: This option is located in the Image group of the Home tab. Its icon is the line across the diamond shape. This option is used to delete unnecessary part of the picture.



Q:3 Write the name of tools available in Tools Menu.

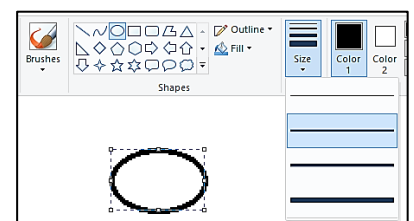
Ans: The following are the names of the tools in the Tools menu:

- Pencil
- Fill with color
- Text
- Magnifier
- Color picker
- Eraser



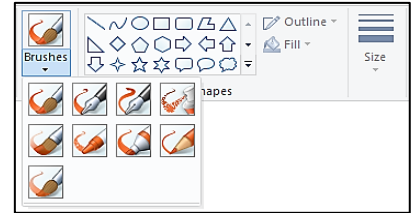
Q:4 What is size tool?

Ans: Size tool is available on the Home tab. This tool gets active only when we choose a brush or shape tool. With the help of this tool, we can set the thickness of the line.



**Q:5 Write about brushes tool.**

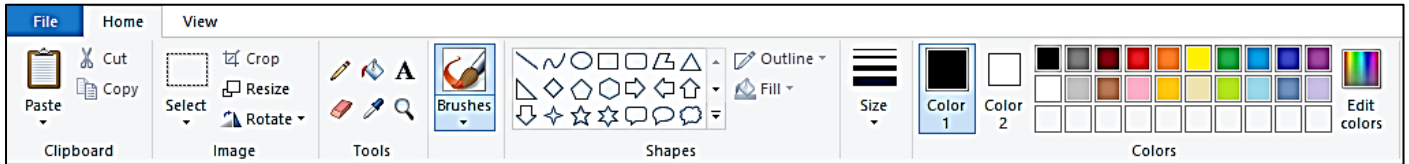
**Ans:** The Brush Tool is available on the Home tab. With the help of this tool, we can create drawings using textures of different widths. Paint offers us 9 different types of brushes.



**Q:6 Give the name of groups present in Home tab ribbon.**

**Ans:** Following are the name of groups available in the Home tab ribbon:

- |              |           |
|--------------|-----------|
| 1. Clipboard | 4. Shapes |
| 2. Image     | 5. Colors |
| 3. Tools     |           |

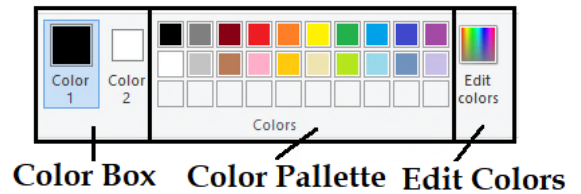


**Que:4 Long Answer type Questions:**

**Q:1 Explain the color tools of MS Paint**

**Ans:** The Color tab of the Home tab has three sections, which are defined below:

- **Color box:** It shows the active colors. It has two options: Color 1 and Color 2. Color 1 represents the foreground color and Color 2 represents the background color.
- **Color Palette:** This is a strip of different colors. From which we can choose any color for drawing.
- **Edit Colors:** This option is used to insert more colors in the lower bar of the color palette.



**Q:2 What is Text Tool? How to Formatting the text**

**Ans:** The Text tool is an important tool in the Tools group. It is used to insert text into the drawing. In Paint, when we work with this tool, a new Text tab appears. Text can be easily formatted using the tools available in this tab. Such as:

- Font of the text can be changed.
- Font size of the text can be changed.
- Text style - **Bold, Italic, Underline and Strikethrough** can be applied

